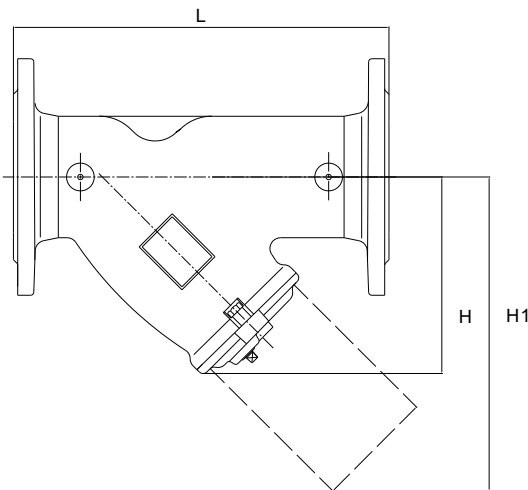
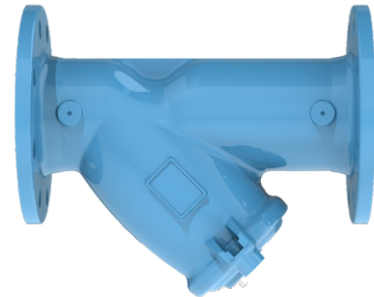




Material List

No.	Part Name	Material	Specification
1	Body	Ductile Iron	EN-JS 1050
2	Bonnet	Ductile Iron	EN-JS 1050
3	Screen	Stainless Steel 304	-
4	O-Ring	EPDM	-
5	Drain Plug	Stainless Steel 201	-
6	Bolt	Steel	-
7	Nut	Steel	-



• Features

1. Filter debris carried by the fluid in pipeline
2. Stainless Steel perforated screen inside
3. Machined test point plugs are available

• Working Pressure

16 Bar

• Flange Connection

ASME Class125/Class 150
BSEN1092-2 PN10/PN16
AS2129 Table D/Table E
JISB2239 10K/16K

• Coating

Blue(RAL5015)/Black(RAL9005)/Grey(RAL7016)
Customization Accepted

Dimensions (mm)

DN	50	65	80	100	125	150	200	250	300	350	400	450	500	600
Inch	2"	2-1/2"	3"	4"	5"	6"	8"	10"	12"	14"	16"	18"	20"	24"
H	110	135	155	190	255	290	335	428	470	625	686	746	845	984
H1	165	205	230	295	350	400	510	665	745	940	1230	1110	1550	1560
L	230	290	310	350	400	480	600	730	850	980	1100	1200	1250	1450

Cv Value

DN	50	65	80	100	125	150	200	250	300	350	400	450	500	600
Inch	2"	2-1/2"	3"	4"	5"	6"	8"	10"	12"	14"	16"	18"	20"	24"
CV	71.3	110.9	174.2	253.4	396	570.3	863.4	1711	2218	3168	4673.6	6178.7	7763.0	9505.7

Cv is the flow rate of water in US gallons per minute of 60°F water, which passes through the valve with 1psi pressure drop across the valve.