



ANBi

A New Building Idea

THE PROFESSIONAL'S CHOICE



**PRODUCT
PROFILE**



WE ADD VALUE TO YOUR BUSINESS

INDEX

1. ABOUT US	(3-5)
2. ANBI Valves & Fittings.....	(6)
3. ANBI Plumbing & Sanitary Accessories.....	(7)
4. ZENITH CPVC Fittings – CONCEPT PPR Fittings.....	(8)
5. HERZ Valves.....	(9)
6. Crane Valves – PEX Plumbing Valves & Fittings.....	(10)
7. CEPEX Valves & Fittings.....	(11)
8. RBMFLEX Rubber Bellows.....	(12)
9. BIS GI & MI Fittings.....	(13)
10. Plumbing Solutions.....	(14 -15)
11. HVAC Solutions.....	(16)
12. Glues, Adhesives & Painting Solutions.....	(17)
13. Safety Solutions.....	(18)
14. Hardware & Fastener Solutions.....	(19)
15. Hand & Power Tools Solutions.....	(20)
16. Electrical Solutions.....	(21)
17. Special Valves.....	(22)
18. Showroom Shots / New Arrivals.....	(23)
19. Location Maps.....	(24)

ABOUT US

ANBI Trade – located in UAE's largest harbor and export city, Dubai - is a trading and marketing company specialized in the supply of following items;

PLUMBING PRODUCTS

ELECTRICAL PRODUCTS

MECHANICAL PRODUCTS

OIL & GAS PRODUCTS

ANBI Trade holds one of the most complete lines of plumbing, piping connections and support system. For more than a century we have been gaining intimate knowledge of local requirements & in the world's important markets, especially through our own branches and representatives in various parts of United Arab Emirates.

ANBI, your smart choice for your projects. WHY?



1) QUALITY PRODUCTS

Save your time & cost by getting quality products for competitive price.



2) HUNDREDS OF THOUSANDS OF PRODUCTS IN INVENTORY

Fast delivery as we keep proper inventory system and keeping most of the items in stock.



3) COST EFFECTIVE

All our products are brought directly from the manufacturers, which makes our products very cost effective.



4) CONVENIENT HOURS

Online assistance 24 hours, we are open from 8:00 AM to 13:00 PM & 15:00 PM to 19:00 PM (GMT +4).



5) COMPLETE LINE OF BUILDING MATERIALS, SANITARY FITTINGS, MARINE, HARDWARE, OILFIELD ETC.

Reduce your purchasing costs by buying a complete system from a single source.



6) DROP SHIP CAPABILITIES

Fast & direct delivery to multiple locations.



7) FREIGHT TRAFFIC MANAGEMENT

Fast, reliable, cost-effective delivery of orders with the help of a modern logistics department.



8) OVER 20 YEARS IN THE BUILDING MATERIAL INDUSTRY

Experience boosts confidence. With our strong confidence, you can also be confident in your purchase.

ANBI Group is divided into two sectors ANBI **Trade** & ANBI **Projects**

ANBI TRADE

ANBI Trade holds one of the most complete lines of plumbing, piping connections and support system. For more than a century we have been gaining intimate knowledge of local requirements in the world's important markets, especially through our own branches and representations in Dubai, United Arab Emirates.

In order to exclusively offer premium quality we developed and expanded the supply programme under our own brand name ANBI as well as under our manufacturers' brands. With continuous success, we have been entrusted with the marketing of various branded products predominantly by well-known Italian and European manufacturers, mainly for the supply to Middle East and Africa.

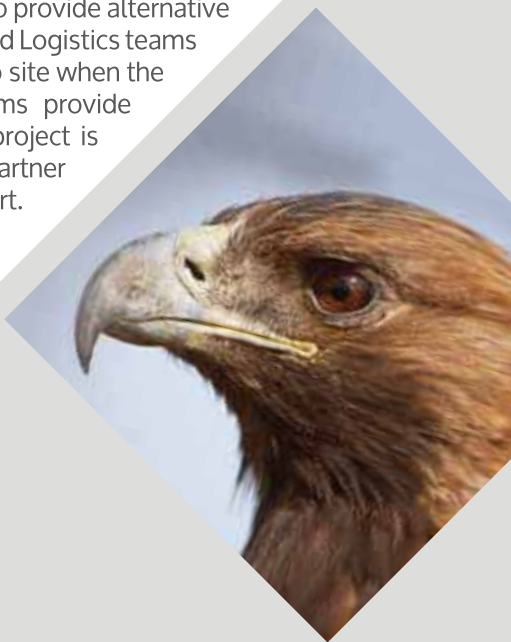
OUR IDEOLOGIES

- Do It Right Every Time
- Teamwork Creates Success
- Achieving Goals Is Rewarding
- We Respect The Dignity Of Each Individual
- Recognize Performance
- We Are Proud Of Our Company
- Keep One Another Informed
- Keep Our Customers Satisfied

ANBI PROJECTS

The Project division has become the 'go-to' choice for leading Developers, Architects, Interior Designers and Contractors, with our products represented in several of the world's most iconic projects.

Our core strength is the ability to work with our clients through every stage of the project. Our specifications team works with the architects and designers on product selection before passing it to our sales team in the relevant location who ensure that our specified product is ordered or to provide alternative options where it is not. Post Sales and Logistics teams ensure the products are delivered to site when the client wants them, Technical teams provide installation support and once the project is live, our Retail team or local partner provide on-going operational support. This approach has led to us having our products successfully installed in several prestigious projects including the Dubai Mall, Emirates Mall, Al Ghurair City, Kemepenski Hotel etc



OUR VISION

AS A RETAILER

To expand the ANBI retail network across the Middle East & Africa, through a mixture of wholly owned and franchised showrooms that provide medium to high end designer bathrooms to a discerning client base.

AS A WHOLESALE

Through offering full loads on an agency basis and broken bulk on invoiced supply, develop and maintain a significant presence in each of the markets in which it operates.

AS A PROJECT SUPPLIER

To be the supplier of choice for the Middle East & Africa for direct project supply of bathroom fixtures and fittings, tiles and plumbing materials, through providing excellent customer service and integrating with the project management team to add value at every stage.



OUR INFRASTRUCTURE

1) INFORMATION & TECHNOLOGY

All ANBI departments are fully networked on the highly sophisticated ERP system, which has been specifically designed for distribution businesses.

The system offers many benefits including;

- Comprehensive database of products.
- Consolidated invoicing.
- Computerized stock control.
- Customer purchase history.
- Electronic mail

2) SUPPLY CHAIN CAPABILITIES | DISTRIBUTION CENTRE

To serve the demands of our customers we do have an excellent warehouse facility stocking over more than 10,000 products. This has enabled us to deliver the goods as fast as possible. With easy access to both sea and air freight facilities, stock can be efficiently mobilised and distributed to our clients across the UAE and the wider Gulf region and Africa.

The facility has enabled the development of the ANBI range to become the most comprehensive available in the market today, and with the latest warehouse management system we can optimise stock levels and track the movement of thousands of product every week.

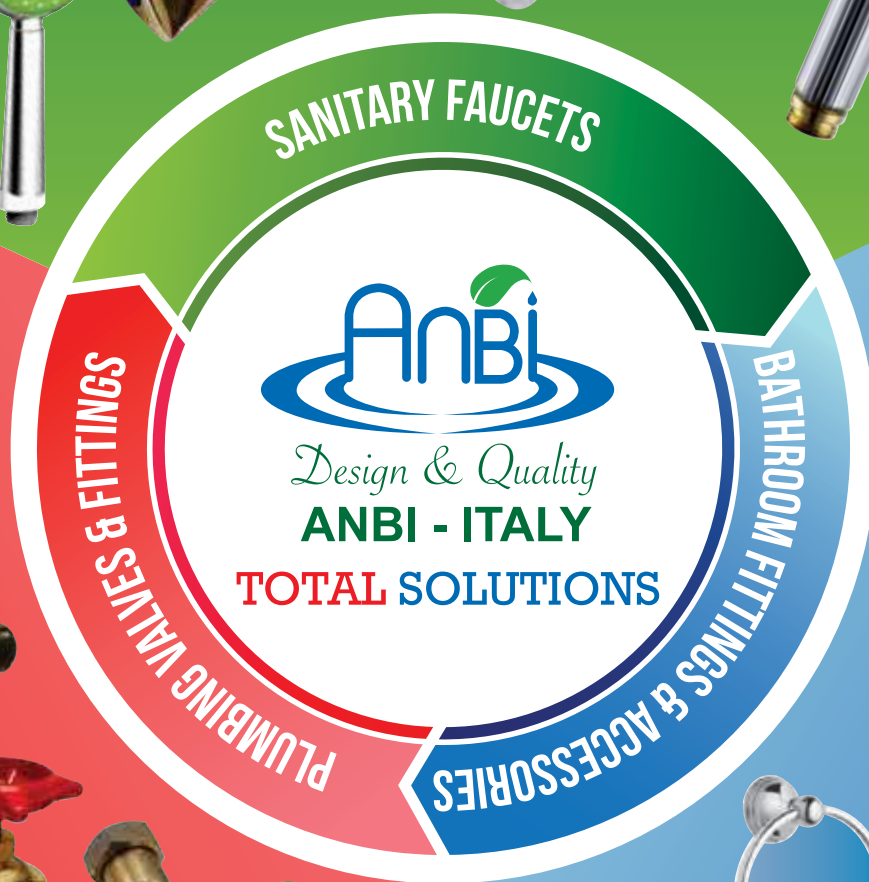
Al Aweer Distribution Centre

M2 Space: Primary 5200 M2

What's unique: This Distribution Center, located at the AL Aweer, Ras Al Khor Area creates an in-depth partnership and distribution synergies for products imported at this center, to all other regional facilities.



FAUCET MIXERS | SHOWER MIXERS | SINK MIXERS | SHOWER HEADS | SHATTAFS | ANGLE VALVES



FLANGES
GATE VALVES | STRAINERS
TEST PLUG | AIR VENT | BRASS FITTINGS
GI BACKING RING | GAUGE COCK
METER CONNECTORS

BATHROOM FITTINGS | FLUSH VALVES
FLEXIBLES | CP FITTINGS



Design & Quality
ANBI - ITALY

BATH & KITCHEN



Thermo concept

UNIQUE TEMPERATURE RESISTANCE

The Thermoconcept pipe system is designed for continuous temperatures of 0°C to 70°C, short-term peak temperatures of up to 100°C and a service life of Minimum 50 years.

Draino concept SILENT



WRAS



- SCH 40 PVC PIPES & FITTINGS.
- SCH 80 PVC PIPES & FITTINGS.
- SCH 80 CPVC PIPES & FITTINGS.
- DWV PIPES & FITTINGS.
- VALVES.



ZENITH[®]





Dynamic Control Valves..

- ♡ Complete HVAC valve package.
- ♡ 100% Made in EU.
- ♡ 8 factories in all over EUROPE.
- ♡ 5 years guarantee on all products.
- ♡ ISO certified company.



WRAS
Water Regulations Advisory Scheme



VALVES
PIPE
FITTING
PIPE FITTINGS
VALVES
FITTING
PIPE VALVE
FITTING



BUTTERFLY
ACTUATION BALL
CAST STEEL
DUO-CHECK II
IRON
KNIFE GATE
FORGED STEEL BALL



CRANE®



Crane Fluid Systems offers a full range of traditional valves as well as a range of commissioning valves for static and variable flow systems.



CHROME | BRASS | PLASTIC



PEX
PLUMBEX UK
www.plumbex.co.uk

Electric valves



Ball valve



PVC Y Strainer



PP Compression Fittings



Filtration valves



HDPE 100 fittings



U PVC Pipes



CEPEX

PVC-U & PVC-C VALVES & FITTINGS

Sight Glasses



Irrigation Valve Box



Sprinklings



Actuator Valves



PVC Valves



HP Pipe Fittings



FLUID HANDLING EXPERTS

WATER

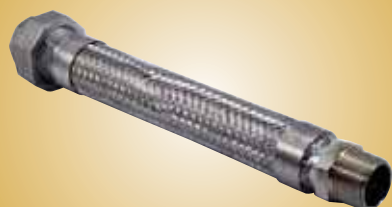
IRRIGATION

INDUSTRY



RBM flex

VIBRATION ISOLATORS & JOINT COUPLINGS



RBM FLEX:

RBM FLEX supplies elastomeric pipe expansion joints / flexible connectors, suitable for use within the piping system and at connection points of piping with mechanical equipment. These are designed to - compensate for axial, transverse and angular pipe movements; reduce transmission of noise and vibration in the system; cushion water hammer.

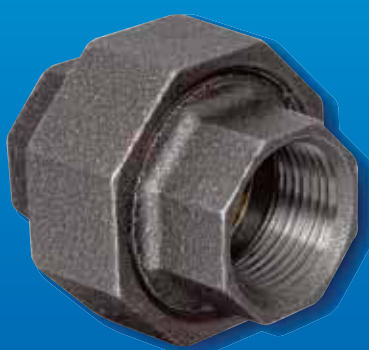


Design & Quality
ANBI - ITALY





GALVANIZED - MALLEABLE PIPE FITTINGS



OUR GENIUS PIPE FITTINGS

BIS founded in 1974, is one of the leading manufacturer and exporter of the High grade Malleable Iron Pipe Fittings for use in Water, Gas and Oil and Air services. **BIS** fittings are manufactured according to the International standards, namely, the **American Standard (ANSI/ASTM)**, the **British Standard (BS EN)**, and the **DIN/European Standard (EN)**



Allpex®
COPPER BRAZING
FITTINGS



**HP PVC PIPES / LOW PRESSURE
PVC PIPES**



concept *Draino*
SILENT
SILENT TYPE
DRAIN FITTINGS



Cosmoplast

HDPE Pipes
POLYTHENE PIPE ROLL



STAR
PIPES & FITTINGS

LOW PRESSURE
PVC DRAIN FITTINGS



EloFIT

HDPE PIPE FITTINGS



Fernico
Inc.

FLEXIBLE RUBBER COUPLING
FOR LOW PRESSURE
APPLICATIONS



B METERS

WATER METERS



PY

Pegler Yorkshire
VALVES & COMPRESSION
FITTINGS



TERRAIN

LOW PRESSURE PIPE FITTINGS
(DRAIN FITTINGS)



litap
ITALY S.p.A.

FOOT VALVES & NRVs



YORKSHIRE
COPPER TUBE

COPPER TUBES FOR
PLUMBING





WATER SAVING ARETORS
BRASS FITTINGS
CP FITTINGS



BrassCraft

STAINLESS STEEL FLEXIBLES
[AMERICAN STANDARD]



BLANCO

STAINLESS STEEL SINKS



BOSSINI
HIGH QUALITY
SHOWER SYSTEMS



GEBERIT

FLUSH FITTINGS / CONCEALED
FLUSH FITTINGS ACCESSORIES



GROHE

BATHROOM FITTINGS
& ACCESSORIES



KISTENMACHER
BATHROOM FITTINGS
& ACCESSORIES



SANITARYWARES



WATER FILTER
HOUSING & FILTERS



GRATINGS

STAINLESS STEEL
GRATINGS



viega

PLUMBING & ACCESSORIES



WC CONNECTORS

WC CONNECTORS





ARKEMA
The world is our inspiration
REFRIGERANT GASES



FLEXIBLE DUCT



GRILLS AND DIFFUSERS



Mastercool
"World Class Quality"
HVAC TOOLS



FIBERGLASS INSULATION



RUBBER GLUES &
CANVAS COATINGS



SUPERLON
RUBBER INSULATIONS



WESTRON
REFREGERENT GAS



Honeywell
CONTROL VALVES



PRESSURE GAUGE &
THERMOMETERS



GROOVED FITTINGS



MS THREADED &
WELD FITTINGS



 BRASS POLISH	 COATINGS & DUCK SEALANTS	 DRAIN OPENER LIQUID	 DRAIN OPENER SET	 FIBERGLASS REPAIRING KIT
 FEVICOL-INDIA WOOD GLUE	 EPOXY ADHESIVE	 EPOXY ADHESIVE	 SEALANTS & GASKET MAKERS	 SEALANTS & GASKET MAKERS
 SPRAY PAINTS & FOAM SPRAYS	 SPRAY PAINTS	 PAINTING ACCESSORIES	 PAINTS	 PAINTS
 PIPE ADHESIVES	 SHELLAC	 SILICONS	 SILICONS	 SILICONS
 WOOD PAINTS & PUTTY	 LUBRICANTS	 LUBRICANTS	 TAPES	 TAPES
 PACKING ITEMS	 POLYTHENE SHEETS	 TILE GLUES & FLOOR COATINGS	 PAINTING ACCESSORIES	 TAPES



HEAD PROTECTION



EYE & FACE PROTECTION



HEARING PROTECTION



BREATHING PROTECTION



PROTECTIVE CLOTHING



FALL PROTECTION



HAND PROTECTION



FOOT PROTECTION



FIRE PROTECTION



FIRST AID &
EMERGENCY EQUIPMENTS



SORBENTS



LOCKOUT- TAGOUT KITS



SCREWS AND RAWL PLUGS



BOLT, NUT & WASHERS



BINDING WIRE,
THREADED RODS & CONNECTORS



ANCHOR BOLTS AND TURN BUCKLES



HINGES AND CONCEALED HINGES



SHELF & ANGLE BRACKETS



CLAMPS & SUPPORTS



RIVET GUN & RIVETS



BATHROOM INDICATOR
LOCKS AND INDICATOR SYMBOLS



DOOR HANDLES AND LOCKS



DRAWER AND GLASS LOCKS



TOWER BOLTS



HASP & STAPLES



DOOR CLOSERS



HANDLES



COAT HOOKS & EYE HOOKS



CASTER WHEELS



SHADE & INSECT NETS, WELDED MESH



Energizer

BATTERIES\TORCHES
EMERGENCIES



W Light

TORCHES - EMERGENCIES



MAGLITE
FLASHLIGHTS

TORCHES



DORMER - DRILL BITS



FLUKE

MEASURING INSTRUMENTS



GARDEN TOOLS



GAZELLE-INDIA



Hans Tools
THE WORLD CLASS TOOLS FOR PROFESSIONAL/INDUSTRIAL



MASONRY TOOLS



Makita
INDUSTRIAL POWER TOOLS



J TECH
TOOL
HAND TOOLS



LADDERS &
SCAFFOLDINGS



RASTA



RIDGID
HAND TOOLS



STANLEY
HAND TOOLS



Starrett



ECLIPSE

BLADES & HOLES AW BITS



HITACHI
POWER TOOLS

POWER TOOLS



HOSE CLIPS



TEKIRO
TOOLS

HAND TOOLS

 <p>ABB</p> <p>BREAKERS</p>	 <p>hager</p> <p>BREAKERS</p>	 <p>CABLE GLANDS, LUGS & TIES</p>	 <p>CABLE REELS</p>	 <p>EARTH & LIGHTNING PROTECTION ACCESSORIES</p>
 <p>KED BROOKE</p> <p>ELECTRICAL FANS</p>	 <p>PHILIPS</p> <p>ELECTRICAL BULBS & TUBES</p>	 <p>OSRAM</p> <p>ELECTRICAL BULBS & TUBES</p>	 <p>CORRUGATED PIPES & FLEXIBLES</p>	 <p>EXPLOSION PROOF FITTINGS</p>
 <p>FLOOD LIGHTS, CEILING LIGHTS AND OTHER WEATHER PROOF</p>	 <p>GI CONDUIT PIPES, CABLE TRAYS & ACCESSORIES</p>	 <p>INSECT KILLER</p>	 <p>BELDEN SENDING ALL THE RIGHT SIGNALS</p> <p>LOW VOLTAGE CABLES & NETWORKING CABLES</p>	 <p>دوخاب Ducab</p> <p>LOW VOLTAGE CABLES & NETWORKING CABLES</p>
 <p>VOLEX ACCESSORIES</p> <p>PVC CONDUIT PIPES, FITTINGS & ACCESSORIES</p>	 <p>DECODUCT CABLE MANAGEMENT SYSTEMS</p> <p>PVC CONDUIT PIPES, FITTINGS & ACCESSORIES</p>	 <p>NUHASS OMAN CABLES & WIRES</p> <p>LOW VOLTAGE CABLES & NETWORKING CABLES</p>	 <p>LOW VOLTAGE CABLES & NETWORKING CABLES</p>	 <p>RR KABEL WIRE NAKHIL, BHAARAT KI NIKHIL MAIN NAKHIL</p> <p>LOW VOLTAGE CABLES & NETWORKING CABLES</p>
 <p>legrand</p> <p>SWITCHES & ACCESSORIES</p>	 <p>TERMINAL BLOCKS & WALL PLUGS</p>	 <p>ARISTON</p> <p>WATER HEATERS</p>	 <p>PEDROLLO ...the spring of life</p> <p>WATER PUMPS</p>	 <p>GRUNDFOS</p> <p>WATER PUMPS</p>
 <p>WEATHER PROOF SWITCHES & SOCKETS</p>	 <p>elbi</p> <p>PRESSURE TANK (ELBI)</p>	 <p>PRESSURE SWITCH (square D)</p>	 <p>Telemecanique</p> <p>PRESSURE SWITCH</p>	 <p>FLOAT SWITCH (RIFFA)</p>

SPECIAL VALVES



AIR RELEASE VALVE(SINGLE AND DOUBLE ORIFICE)



OS & Y VALVES



BASKET STRAINER



SAFETY RELIEF VALVE



CHECK VALVE



FLANGED FOOT VALVES



RESILIENT SEAT AND METAL SEATED GATE VALVES

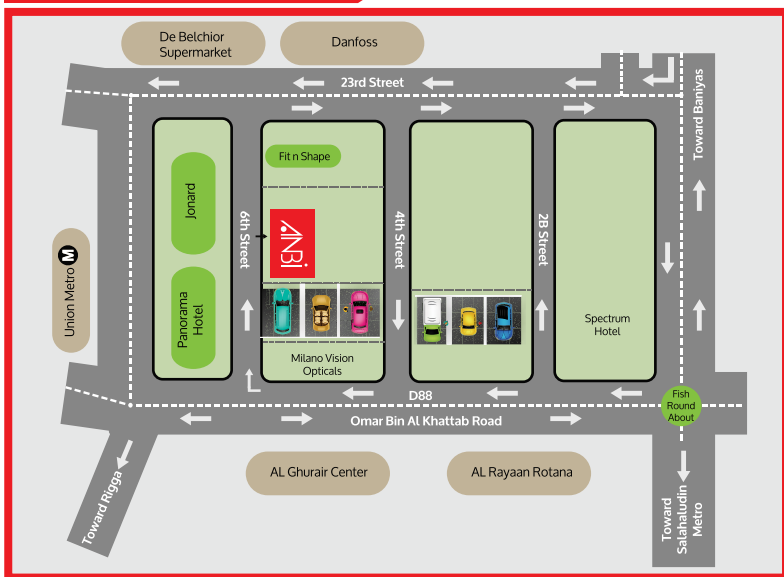


WATER HAMMER ARRESTOR

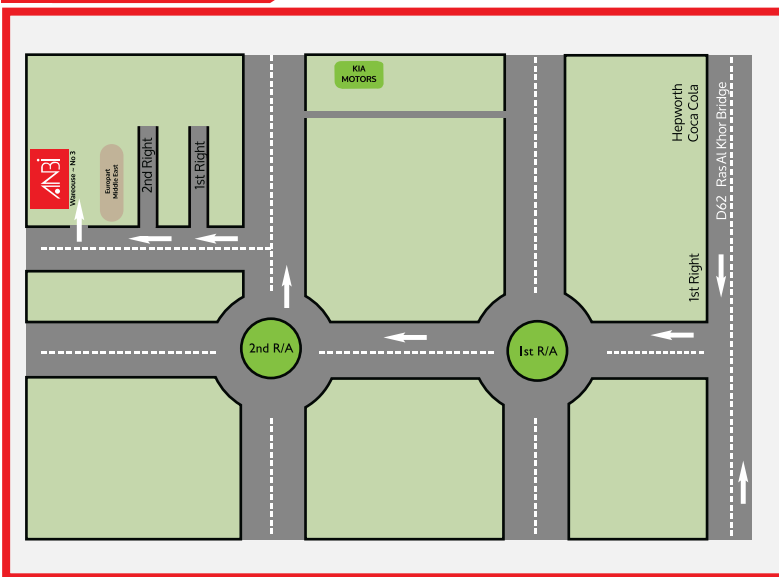




Showroom & Head Office



Distribution Center



MEA HEAD OFFICE & SHOWROOM

ANBI General Trading L.L.C.
Rigga Street, Deira, Dubai, UAE, P.O. Box: 112089
Showroom - 8 & 9 | Makkani - 30338 95680
GPS Coordinates : X- 25.2676639, Y-55.3152321
Office: +971 (0)4 336 1377 | Fax: +971 (0)4 336 1376
Email: info@anbisolutions.com

MEA DISTRIBUTION CENTRE

ANBI Distribution Centre
Ras Al Khor, Al Aweer Industrial Area
Dubai, UAE.
GPS Coordinates X- 25.183723, Y-55.352880
Tel: +971 (0)4 336 1377, Fax: +971 (0)4 336 1376

FACTORY - ITALY

ANBI Italy SRL
Via Dei Rovedi, Pregnana Milanese, Italy
E: info@anbisolutions.com

FACTORY - TAIWAN

ANBI Italy International Co LTD
Sheng Li, 5th Street, Tan Dist,
Taichung, Taiwan ROC
E: info@anbisolutions.com

www.anbisolutions.com



www.facebook.com/anbisolutions2015