

Powertex Motor Run capacitors are developed after extensive Research and Development. Our team studied electrical characteristics of Motor Run AC has Applications and has developed unique capacitors that can withstand the load of the current for many years.

The capacitors are subjected to extensive and vigorous testing and as a result we are able to give the industry capacitors that can be matched by none in terms of quality, durability and reliability. Applications include: Air Conditioners, Motors, Compressors, Air Handlers, Refrigeration Units, Furnaces, Machine Tools, Conveyors, Heat Pumps etc.

Motor Run AC Capacitors



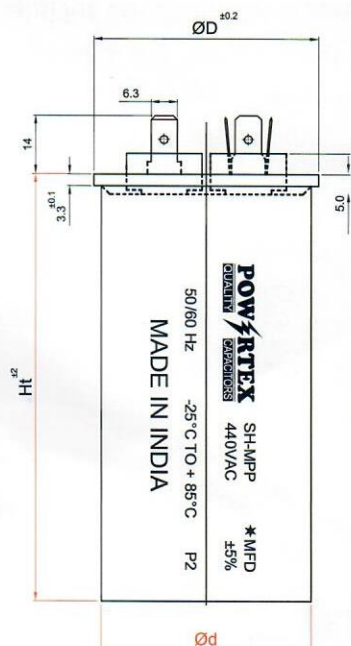
**ENHANCED
ENERGY
EFFICIENCY**

Powertex ADVANTAGE

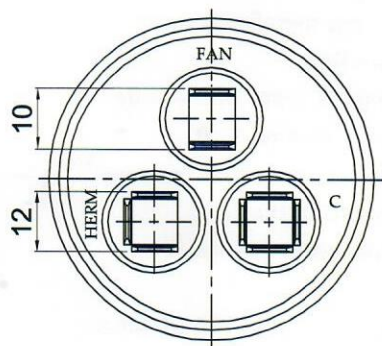
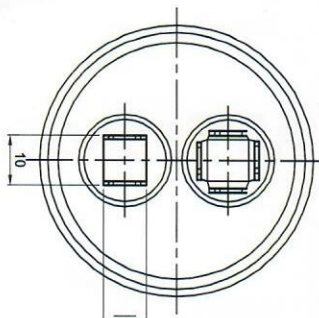
Unique Features

- Made with special technology metalized film that extends the life of the capacitors.
- Can operate with the same efficiency over a wide range of temperatures and humidity.
- Manufacturing process of the capacitor is tailor made to suit the requirements of the application.
- A dual motor run capacitor comes as a single unit with a dual purpose
- Can be used in appliances such as Air – Conditioners, Washing Machines and various other appliances where two motors operate singly or separately.
- Has a built-in Pressure Sensitive Interrupter designed to rupture connection whenever there is a rise in internal pressure.
- Low internal power losses conserve energy
- Single and Dual Ratings
- Non PCB Encapsulation
- ECO Friendly
- High Insulation Resistance
- Safe Tin Plated Terminals.

Motor Run AC Capacitors



440 V Burst Proof Series (P2 Type)			
S.NO.	* MFD	Ht	ØD
1	3.0	70	40
2	5.0	70	40
3	7.5	70	40
4	10.0	82	45
5	15.0	82	45
6	20.0	82	45
7	25.0	102	40
8	35.0	102	45
9	40.0	120	50
10	45.0	120	50
11	50.0	120	50
12	55.0	120	50
13	60.0	120	50



440 V Burst Proof Series (P2 Type)		
S.NO.	★ MFD	Can Sizes (ØDxHt)
1	35+5	50X102
2	40+5	50X102
3	45+5	50X120
4	50+5	50X120
5	55+5	50X120
6	60+5	50X120
7	65+5	50X120



Dual Motor Run AC Capacitors