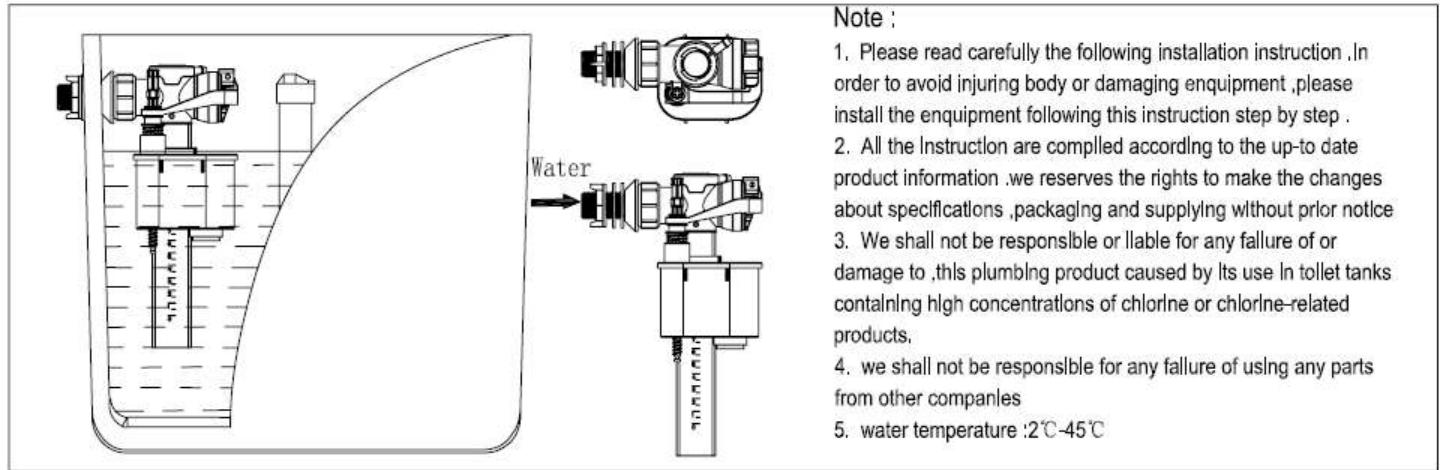


## Fill Valve Installation Instruction

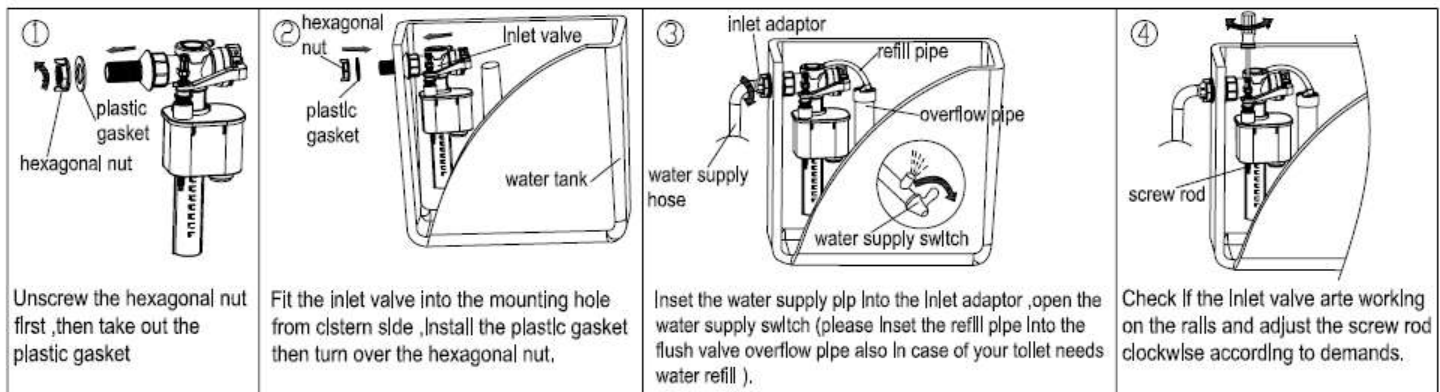
### Installation guide



### I 、 Preparing work:

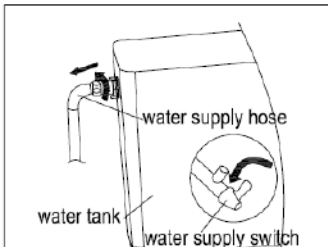
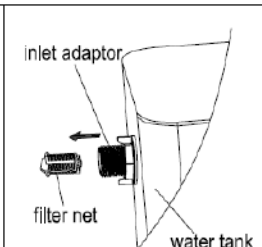
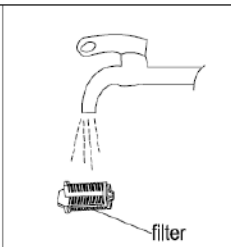
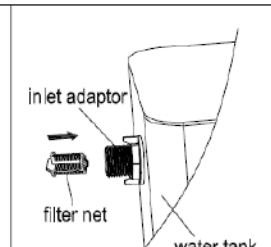
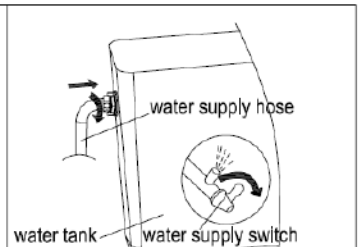
Please remove the broken tank fittings and clean the water cistern carefully,please make sure all waste been cleaned up before mounting the new tank fittings.

### II 、 Inlet valve install



### III、 Filter clean (please do clean the fliter periodically )

1. The filter is put inside of the inlet thread

|   |   |   |   |   |
|---|---|---|---|---|
|  <p>water supply hose<br/>water tank<br/>water supply switch</p> <p>Shut off the water inlet switch then unscrew the water supply hose from inlet adaptor.</p> |  <p>inlet adaptor<br/>filter net<br/>water tank</p> <p>Take out the filter net from inlet adaptor .</p> |  <p>filter</p> <p>Clean the filter net by water .</p> |  <p>inlet adaptor<br/>filter net<br/>water tank</p> <p>Install the clean filter net back to the Inlet adaptor.</p> |  <p>water supply hose<br/>water tank<br/>water supply switch</p> <p>Fit the water supply hose back to the water inlet adaptor then turn on the water supply switch.</p> |
|---|---|---|---|---|

### IV、 Exception handles

| Malfunction                              | Causation  | Handling   |
|--|--|--|
| Water line too high or too low           | Inlet valve didn't adjust to a suitable position   | Adjust the water valvel  |
| Inlet valve couldn't shut off or fill in | <ol style="list-style-type: none"> <li>1. Inlet water switch shut off</li> <li>2. the cistern wall interrupt the movement of the inlet valve float cup</li> <li>3. filter net get dirty</li> <li>4. the refill pipe wasn't install in correct way</li> </ol> | <ol style="list-style-type: none"> <li>1. turn on the inlet water switch</li> <li>2. adjust the inlet valve to correctly direction</li> <li>3. washing the filter net see figure attached</li> </ol> |

FIGURE

