

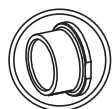
DIAPHRAGM VALVES - EXTREME SERIES

VÁLVULAS DE DIAFRAGMA - SERIE EXTREME



Sizes	Solvent cement D16 - D63 (DN10-DN50) Threaded 3/8" - 2" (DN10-DN50)	
Standard end connections	Solvent socket - Metric, ASTM, British standard Threaded - BSP, NPT Flanges - DIN, ANSI Butt welding - SDR11	EN ISO 1452, EN ISO 15493, BS 4346-1, ASTM D 2467 ISO 228-1, ASTM D 2464 EN558 Serie 1 DIN 3202-1, ANSI ASME B16.5
Working pressure	@ 20°C (73°F) D16 - D63 (3/8" - 2"): PN 10 (150 psi)	
Materials	Body: PVC-U / CPVC / PP-H	O-rings / diaphragm: EPDM / FPM
Characteristics	<ul style="list-style-type: none"> • Excellent flow characteristics and minimal pressure drop. • Safety device incorporated in the handle. • Visual position indicator. • 100% factory tested (with air and water). • Protection in the closing bolts. • Very low operating torque. • Resistance to many inorganic chemicals. • Excellent flow characteristics. 	<ul style="list-style-type: none"> • Excelente características de conducción y mínimas pérdidas de carga. • Seguro de apertura incorporado en el volante. • Indicador visual de posición. • Probadas al 100% en fábrica (con aire y agua). • Protección en los tornillos de cierre. • Par de maniobra de apertura y cierre muy bajo. • Resistencia a múltiples sustancias químicas inorgánicas. • Excelentes características de conducción.
Certifications / Regulations	Ball valve design regulation - EN ISO 16138 Certificate - ACS (Attestation de Conformité Sanitaire)	

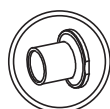


PVC-U DIAPHRAGM VALVE
metric solvent socketVÁLVULA DE DIAFRAGMA PVC-U
encolar hembra métrico

DN	PN	D	EPDM	€	FPM	€
15	10	20	54817	67,01	56786	128,01
20	10	25	54818	72,42	56794	133,42
25	10	32	56663	86,29	57245	208,08
32	10	40	56664	100,16	57251	221,95
40	10	50	56675	117,81	57295	286,11
50	10	63	56676	144,64	57301	312,94

PVC-U DIAPHRAGM VALVE
female thread BSP
Stainless steel reinforcementVÁLVULA DE DIAFRAGMA PVC-U
roscar hembra BSP
refuerzo acero inoxidable

DN	PN	D	EPDM	€	FPM	€
15	10	½"	54819	74,15	56787	135,15
20	10	¾"	54820	79,97	56795	140,96
25	10	1"	56665	95,37	57246	217,16
32	10	1¼"	56666	110,67	57252	232,46
40	10	1½"	56677	131,07	57296	299,37
50	10	2"	56678	159,83	57302	328,13

PVC-U DIAPHRAGM VALVE
metric male solvent socketVÁLVULA DE DIAFRAGMA PVC-U
encolar macho métrico

DN	PN	D	EPDM	€	FPM	€
15	10	20	54815	56,30	56784	117,30
20	10	25	54816	61,30	56792	122,30
25	10	32	56659	78,03	57243	199,82
32	10	40	56660	88,43	57249	210,22
40	10	50	56671	106,08	57293	274,38
50	10	63	56672	125,36	57299	293,66

PVC-U DIAPHRAGM VALVE EXTREME SERIES - VÁLVULA DIAFRAGMA PVC-U SERIE EXTREME

FAM VDI620

PVC-U



PVC-U DIAPHRAGM VALVE
metric male solvent socket
true union

VÁLVULA DE DIAFRAGMA PVC-U
encolar macho métrico
unión 3 piezas

DN	PN	D	EPDM	€	FPM	€
15	10	20	66849	70,85	68601	131,85
20	10	25	66850	76,45	68602	137,45
25	10	32	66851	89,67	68603	211,46
32	10	40	66852	103,91	68604	225,70
40	10	50	66866	119,71	68605	288,01
50	10	63	66867	149,59	68606	317,89



PVC-U DIAPHRAGM VALVE
PE100 / SDR11

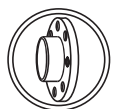
VÁLVULA DE DIAFRAGMA PVC-U
PE100 / SDR11



DN	PN	D	EPDM	€	FPM	€
15	10	20	64977	74,15	66914	135,15
20	10	25	64978	79,97	66915	140,97
25	10	32	64979	95,37	66916	217,46
32	10	40	64980	110,67	66917	232,46
40	10	50	64981	131,07	66918	299,37
50	10	63	64982	159,83	66919	328,13

PVC-U DIAPHRAGM VALVE EXTREME SERIES - VÁLVULA DIAFRAGMA PVC-U SERIE EXTREME FAMVDI620

PVC-U



PVC-U DIAPHRAGM VALVE
 PVC-U ISO flanges
 loose flange (RF)

VÁLVULA DE DIAFRAGMA PVC-U
 bridas ISO en PVC-U
 brida loca (RF)



DN	PN	D	EPDM	€	FPM	€
15	10	20	54823	72,83	56790	133,82
20	10	25	54824	81,50	56797	142,49
25	10	32	56669	95,78	57248	217,57
32	10	40	56670	113,12	57254	234,91
40	10	50	56679	133,82	57298	302,12
50	10	63	56680	165,14	57304	333,44



PVC-U DIAPHRAGM VALVE
 PVC-U ANSI flanges
 fixed flange (FF)

VÁLVULA DE DIAFRAGMA PVC-U
 bridas ANSI en PVC-U
 brida fija (FF)

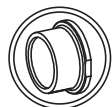


DN	PN	D	EPDM	€	FPM	€
15	10	½"	54823AB	83,06	56790AB	144,05
20	10	¾"	54824AB	92,67	56797AB	153,66
25	10	1"	56669AB	108,40	57248AB	230,19
32	10	1¼"	56670AB	125,58	57254AB	247,37
40	10	1½"	56679AB	152,54	57298AB	320,84
50	10	2"	56680AB	186,12	57304AB	354,42

CPVC DIAPHRAGM VALVE EXTREME SERIES - VÁLVULA DIAFRAGMA CPVC SERIE EXTREME

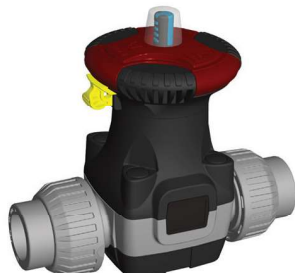
FAM VDI621

CPVC



CPVC DIAPHRAGM VALVE
metric solvent socket

VÁLVULA DE DIAFRAGMA CPVC
encolar hembra métrico



DN	PN	D	EPDM	€	FPM	€
15	10	20	56802	84,05	56819	145,04
20	10	25	56807	96,19	56859	157,18
25	10	32	57257	110,57	57267	232,36
32	10	40	57262	140,76	57272	262,55
40	10	50	57307	154,84	57320	323,14
50	10	63	57312	204,20	57325	372,50

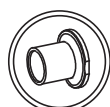


CPVC DIAPHRAGM VALVE
female thread BSP
Stainless steel reinforcement

VÁLVULA DE DIAFRAGMA CPVC
roscar hembra BSP
refuerzo acero inoxidable



DN	PN	D	EPDM	€	FPM	€
15	10	½"	56803	91,60	56820	152,59
20	10	¾"	56808	104,04	56860	165,04
25	10	1"	57258	119,95	57268	241,74
32	10	1¼"	57263	151,78	57273	273,56
40	10	1½"	57308	168,71	57321	337,01
50	10	2"	57313	220,22	57326	388,52

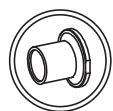


CPVC DIAPHRAGM VALVE
metric male solvent socket

VÁLVULA DE DIAFRAGMA CPVC
encolar macho métrico

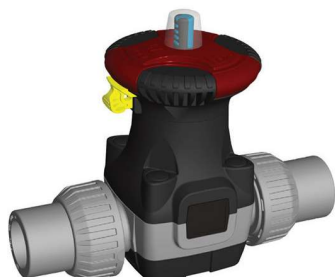


DN	PN	D	EPDM	€	FPM	€
15	10	20	56800	70,69	56817	131,68
20	10	25	56805	80,99	56857	141,98
25	10	32	57255	99,45	57265	221,24
32	10	40	57260	121,89	57270	243,68
40	10	50	57305	139,43	57318	307,73
50	10	63	57310	172,99	57323	341,29

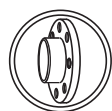


CPVC DIAPHRAGM VALVE
metric male solvent socket
true union

VÁLVULA DE DIAFRAGMA CPVC
encolar macho métrico
unión 3 piezas

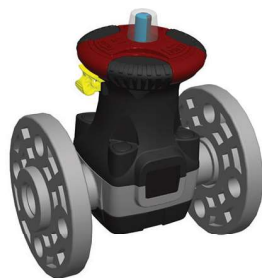


DN	PN	D	EPDM	€	FPM	€
15	10	20	66881	84,49	69096	147,49
20	10	25	66882	96,56	69097	157,56
25	10	32	66883	110,65	69098	232,44
32	10	40	66884	140,59	69099	262,38
40	10	50	66885	158,28	69100	326,58
50	10	63	66886	209,21	69101	377,51

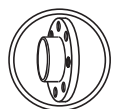


CPVC DIAPHRAGM VALVE
CPVC ISO flanges
loose flange (RF)

VÁLVULA DE DIAFRAGMA CPVC
bridas ISO en CPVC
brida loca (RF)

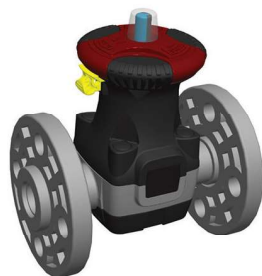


DN	PN	D	EPDM	€	FPM	€
15	10	20	56804	95,17	56821	156,16
20	10	25	56809	119,24	56861	180,23
25	10	32	57259	127,81	57269	249,59
32	10	40	57264	179,83	57274	301,61
40	10	50	57309	213,49	57322	381,79
50	10	63	57314	296,92	57327	465,22



CPVC DIAPHRAGM VALVE
CPVC ANSI flanges
fixed flange (FF)

VÁLVULA DE DIAFRAGMA CPVC
bridas ANSI en CPVC
brida fija (FF)

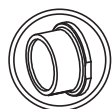


DN	PN	D	EPDM	€	FPM	€
15	10	½"	56804AB	105,39	56821AB	166,38
20	10	¾"	56809AB	131,02	56861AB	192,01
25	10	1"	57259AB	140,93	57269AB	262,71
32	10	1¼"	57264AB	191,92	57274AB	313,70
40	10	1½"	57309AB	228,46	57322AB	396,76
50	10	2"	57314AB	325,84	57327AB	494,14

PP-H DIAPHRAGM VALVE EXTREME SERIES - VÁLVULA DIAFRAGMA PP-H SERIE EXTREME

FAM VDI622

PP-H



PP-H DIAPHRAGM VALVE
socket fusion

VÁLVULA DE DIAFRAGMA PP-H
termofusión hembra

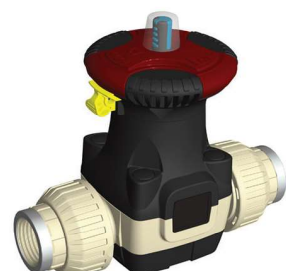


DN	PN	D	EPDM	€	FPM	€
15	10	20	56864	77,42	56872	138,41
20	10	25	56867	83,54	56877	144,53
25	10	32	57277	99,76	57283	221,54
32	10	40	57280	114,85	57286	236,64
40	10	50	57330	135,76	57336	304,06
50	10	63	57333	164,93	57339	333,23

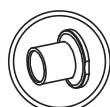


PP-H DIAPHRAGM VALVE
female thread BSP
Stainless steel reinforcement

VÁLVULA DE DIAFRAGMA PP-H
roscar hembra BSP
refuerzo acero inoxidable

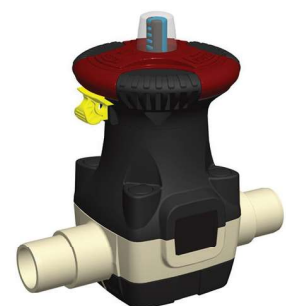


DN	PN	D	EPDM	€	FPM	€
15	10	½"	63056	84,97	63062	145,96
20	10	¾"	63057	91,39	63063	152,39
25	10	1"	63058	109,24	63064	231,03
32	10	1¼"	63059	125,87	63065	247,66
40	10	1½"	63060	149,63	63066	317,93
50	10	2"	63061	180,95	63067	349,25

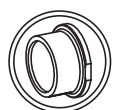


PP-H DIAPHRAGM VALVE
spigot fusion

VÁLVULA DE DIAFRAGMA PP-H
termofusión macho



DN	PN	D	EPDM	€	FPM	€
15	10	20	56862	65,08	56868	126,07
20	10	25	56865	70,58	56874	131,58
25	10	32	57275	89,96	57281	211,75
32	10	40	57278	101,29	57284	223,07
40	10	50	57328	122,20	57334	290,50
50	10	63	57331	143,41	57337	311,71



PP-H DIAPHRAGM VALVE
 spigot fusion
 true union

VÁLVULA DE DIAFRAGMA PP-H
 termofusión macho
 unión 3 piezas

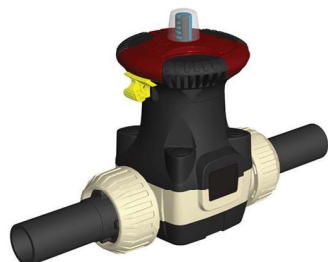


DN	PN	D	EPDM	€	FPM	€
15	10	20	66853	84,97	67189	145,96
20	10	25	66854	91,40	67190	152,39
25	10	32	66855	109,25	67191	231,03
32	10	40	66856	125,87	67192	247,66
40	10	50	66857	149,63	67193	317,93
50	10	63	66858	180,95	67194	349,25



PP-H DIAPHRAGM VALVE
 butt fusion
 PE100 / SDR11

VÁLVULA DE DIAFRAGMA PP-H
 soldadura a tope
 PE100 / SDR11

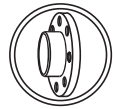


DN	PN	D	EPDM	€	FPM	€
15	10	20	64566	84,97	67195	145,96
20	10	25	64567	91,39	67196	152,39
25	10	32	64568	109,24	67197	231,03
32	10	40	62860	125,87	67198	247,66
40	10	50	64569	149,63	67199	317,93
50	10	63	62861	180,95	67200	349,25

PP-H DIAPHRAGM VALVE EXTREME SERIES - VÁLVULA DIAFRAGMA PP-H SERIE EXTREME

FAM VDI622

PP-H

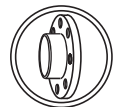


PP-H DIAPHRAGM VALVE
PP-H ISO flanges
fixed flange (FF)

VÁLVULA DE DIAFRAGMA PP-H
bridas ISO en PP-H
brida fija (FF)



DN	PN	D	EPDM	€	FPM	€
15	10	20	67449	102,10	67455	163,09
20	10	25	67450	112,92	67456	173,91
25	10	32	67451	136,08	67457	257,86
32	10	40	67452	157,79	67458	279,57
40	10	50	67453	186,25	67459	354,55
50	10	63	67454	230,21	67460	398,51



PP-H DIAPHRAGM VALVE
PP steel coated ANSI flanges
loose flange (RF)

VÁLVULA DE DIAFRAGMA PP-H
bridas ANSI en PP alma de acero
brida loca (RF)



DN	PN	D	EPDM	€	FPM	€
15	10	½"	67449AB	172,40	67455AB	233,49
20	10	¾"	67450AB	190,07	67456AB	251,06
25	10	1"	67451AB	231,89	67457AB	353,67
32	10	1¼"	67452AB	255,91	67458AB	377,69
40	10	1½"	67453AB	330,63	67459AB	498,93
50	10	2"	67454AB	371,84	67460AB	540,44