

Mod.

GMDM

Getto multiplo quadrante asciutto
Multi jet-super dry



mod. GMDX 90°C



Disponibile versione
acqua calda 30-90°C
Available version
for hot water 30-90°C

ITA mod. GMDM

Getto multiplo, quadrante asciutto, lettura diretta. Realizzato nella versione per acqua fredda (30°C) nei calibri da \varnothing 15 a 50 mm ($1/2'' \div 2''$). Esclusi rischi di corrosione e sedimentazione. Dispositivo antimagnetico a richiesta. Garanzia di lunga durata ed elevata precisione.

DEU mod. GMDM

Vielfachwasserstrahl, trockenes Zifferblatt, Direktablesung. Produziert in den Versionen Kaltwasser (30°C) in den Durchmessern von 15 bis 50 mm ($1/2$ Zoll \div 2 Zoll). Die Risiken von Rost und Ablagerungen sind ausgeschlossen. Antimagnetische Vorrichtung auf Anfrage. Garantiert lange Haltbarkeit und erhöhte Genauigkeit.

ENG mod. GMDM

Multi jet, dry dial, direct reading. Made in the version for cold water (30°C) in the diameters 15 to 50 mm ($1/2'' \div 2''$). Risks of corrosion and sedimentation free. Antimagnetic protection upon request. Long durability and elevated precision guaranteed.

FRA mod. GMDM

Jets multiples, cadran sec à lecture directe, disponible en la version pour eau froide (30°C) et du calibre 15 au calibre 50 mm (de $1/2''$ à $2''$), exclus tous problèmes de corrosion et d'incrustation, équipé d'une protection antimagnétique sur demande, fiabilité dans le temps et précision élevée.

ESP mod. GMDM

Chorro múltiple, esfera seca, lectura directa. Fabricado en la versión para agua fría (30°C) en los calibres de \varnothing 15 a 50 mm ($1/2'' \div 2''$). Libre de riesgos de corrosión y sedimentación. Bajo pedido se suministra con dispositivo antimagnético. Garantía de larga duración y elevada precisión.

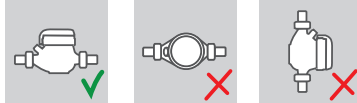
RUS mod. GMDM

Многоструйный счетчик с сухим квадрантом и прямым считыванием. Выпускается в версии для холодной (30°C) воды диаметрами условного прохода от 15 до 50 мм ($1/2'' - 2''$). Исключены риски коррозии и образования осадка. Антимагнитная защита – по запросу. Гарантия долговечности и высокой точности.

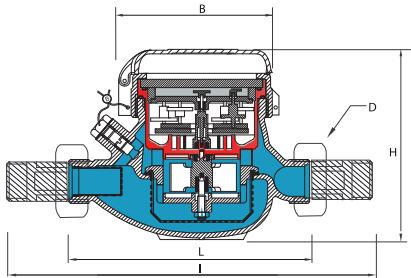
Caratteristiche tecniche - Technical features

Calibro Size	DN	mm in	15 (1/2")	20 (3/4")	25 (1")	32 (1 1/4")	40 (1 1/2")	50 (2")
Portata di sovraccarico Overload flow rate	Q ₄	m ³ /h	3,125	5	7,875	12,5	20	31,25
	Q ₃	m ³ /h	2,5	4	6,3	10	16	25
R = 100 H	Portata di transizione Transitional flow rate	l/h	40	64	100,8	160	256	400
	Portata minima Min flow rate	l/h	25	40	63	100	160	250
R = 160 H	Portata di transizione Transitional flow rate	l/h	25	40	63	100	160	250
	Portata minima Min flow rate	l/h	15,63	25	39,38	62,5	100	156,25
Sensibilità Sensitivity	l/h	l	6	6	10	10	20	20
	Lettura minima Min reading	l	0,05	0,05	0,05	0,05	0,05	0,05
	Lettura massima Max reading	m ³	99.999	99.999	99.999	99.999	999.999	999.999
	Pressione max ammissibile Max admissible pressure MAP	bar	16	16	16	16	16	16

Posizione d'installazione Installation position



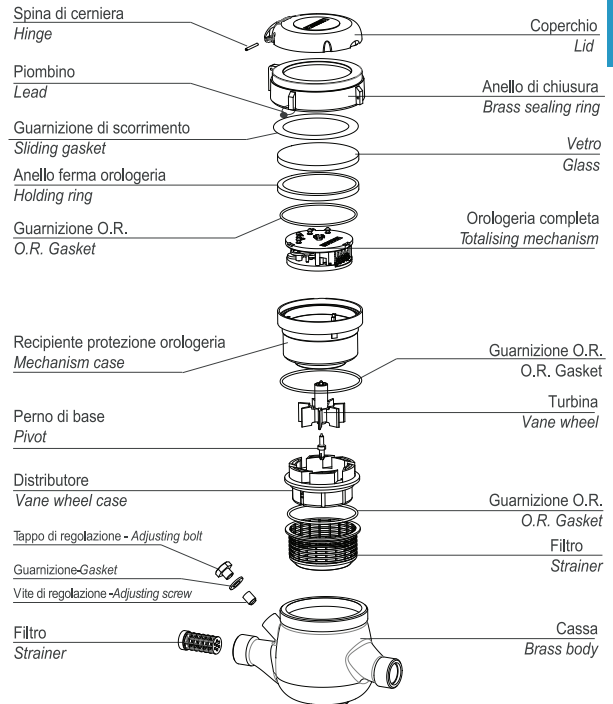
Dimensioni e pesi - Dimensions and Weights



Calibro Size	mm in	15 (1/2")	20 (3/4")	25 (1")	32 (1 1/4")	40 (1 1/2")	50 (2")
L	mm	145-165-190	190	260	260	300	300
l	mm	225-245-270	290	360	380	440	460
H	mm	109	111	117	117	153	172
B	mm	100	100	104	104	126	160
D <small>Filettatura Threading</small>	mm	3/4"	1"	1"1/4	1"1/2	2"	2"1/2
Pesi Weight	kg	1,18	1,40	2,09	2,18	4,38	4,46
		1,41					9,40

Filettatura - Threading EN ISO 228-1:2000

I contatori DN 50 possono essere forniti flangiati secondo ISO 7005-2 / EN 1092-2 PN16
The DN50 meters can be supplied flanged according to ISO 7005-2 / EN 1092-2 PN16



Versione base - Basic version

- » MID R100-H 2004/22/CE
- » Disponibile in versione per acqua fredda 0°C-50°C e per acqua calda 30°C-90°C omologata MID R50 2004/22/CE
- » Trasmissione magnetica
- » Lettura diretta su 5 rulli numeratori (6 rulli numeratori su DN40 e DN50)
- » Quadrante asciutto
- » Coperchio girevole a 360°
- » MID R100-H 2004/22/CE
- » Available for cold water 0°C-50°C and for hot water 30°C-90°C MID R50 2004/22/CE approved
- » Magnetic transmission
- » Direct reading on 5 numeric rolls (6 numeric rolls on DN40 and DN50)
- » Dry dial
- » 360° rotating lid

Su richiesta - Upon request

- » MID R160-H 2004/22/CE
- » Predisposizione per montaggio sistema lancia-impulsi
- » Equipaggiato con sistema lancia-impulsi
- » Protezione anti frode magnetica

- » MID R160-H 2004/22/CE
- » Prearranged for pulse emitter device mounting
- » Equipped with pulse emitter device
- » Anti-magnetic fraud protection

